



(12) **United States Design Patent**
Mullins et al.

(10) **Patent No.:** **US D914,116 S**
(45) **Date of Patent:** **** Mar. 23, 2021**

- (54) **CORNHOLE PLAYING COURT**
- (71) Applicant: **INFINITY OF PRATTVILLE LLC**,
Prattville, AL (US)
- (72) Inventors: **Dennis Mullins**, Prattville, AL (US);
Mike Vaughn, Prattville, AL (US)
- (73) Assignee: **INFINITY OF PRATTVILLE LLC**,
Prattville, AL (US)
- (**) Term: **15 Years**
- (21) Appl. No.: **29/729,198**
- (22) Filed: **Mar. 24, 2020**

Related U.S. Application Data

- (63) Continuation-in-part of application No. 16/827,689,
filed on Mar. 23, 2020.
- (51) **LOC (13) Cl.** **21-02**
- (52) **U.S. Cl.**
USPC **D21/706**
- (58) **Field of Classification Search**
USPC D21/300-303, 312, 314, 321, 334,
D21/365-368, 397, 682, 686, 698, 699,
(Continued)

(56) **References Cited**

U.S. PATENT DOCUMENTS

- 1,237,243 A * 8/1917 Conner A47C 27/001
5/420
 - 2,848,233 A * 8/1958 Wynn A63C 19/12
473/504
- (Continued)

FOREIGN PATENT DOCUMENTS

- CA 2518773 A1 * 3/2007 F25C 3/02
- WO WO-03097191 A1 * 11/2003 A63B 67/066
- WO WO-2014102321 A1 * 7/2014 E04H 6/12

Primary Examiner — Catherine A Tuttle
(74) *Attorney, Agent, or Firm* — Gardner Groff &
Greenwald, PC

(57) **CLAIM**

The ornamental design for a cornhole playing court, substantially as shown and described.

DESCRIPTION

FIG. 1 is a top perspective view of a cornhole playing court showing my new design with the two halves bisected along the break lines and rearranged in order to maximize the scale;

FIG. 2 is a top view thereof;

FIG. 3 is a bottom view thereof;

FIG. 4 is a front elevation view thereof, the back view being a mirror image of the front;

FIG. 5 is an end elevation view of the full cornhole playing court, the opposing end being the same;

FIG. 6 is a top perspective view showing an alternate embodiment of my new design for a cornhole playing court, with the two halves bisected along the break lines and rearranged in order to maximize the scale;

FIG. 7 is a top view thereof;

FIG. 8 is a bottom view thereof;

FIG. 9 is a front elevation view thereof, the back view being a mirror image of the front;

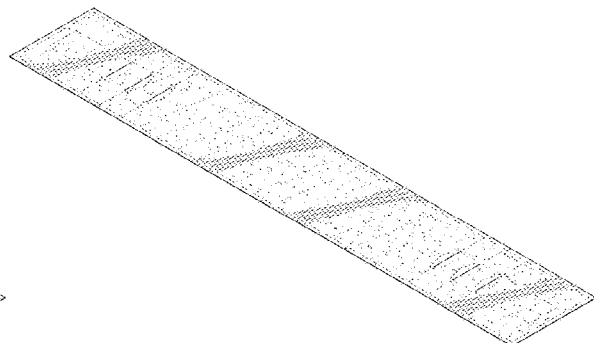
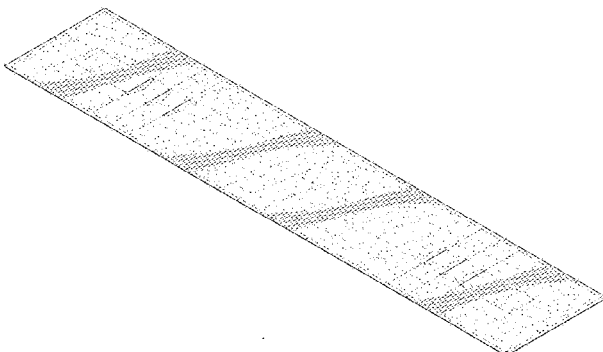
FIG. 10 is an end elevation view of the full cornhole playing court in the alternate embodiment, the opposing end being the same;

FIG. 11 is a top perspective view of the full cornhole playing court of embodiment 1; and,

FIG. 12 is a top perspective view of the full cornhole playing court of embodiment 2.

The broken lines indicating the breaks between the bisected design portions and depicting elements of the cornhole playing court are for illustrative purposes only and form no part of the claimed design.

1 Claim, 10 Drawing Sheets



(58) **Field of Classification Search**

USPC D21/706, 792, 797; D10/46.1; D25/12;
D6/582; 273/404, 406, 407, 409, 410,
273/309; 473/415, 490, 504
CPC ... A63B 67/06; A63B 2067/061; A63C 19/00;
A63C 19/02; A63C 19/04; A63C 19/065;
A63C 19/12

See application file for complete search history.

(56) **References Cited**

U.S. PATENT DOCUMENTS

3,782,663 A * 1/1974 Stevenson E01C 13/08
242/160.4
5,134,857 A * 8/1992 Burley A63C 19/10
220/592.26
D460,139 S * 7/2002 Bradbury D21/792
D509,873 S * 9/2005 Dias D21/792
D589,289 S * 3/2009 Laure D6/582
D591,995 S * 5/2009 Burton D21/698
D660,068 S * 5/2012 Wang D6/582
D785,105 S * 4/2017 Armitage D21/686
2004/0180737 A1 * 9/2004 Reading A63B 67/066
473/490
2009/0020953 A1 * 1/2009 Hallsten E04F 15/06
273/309
2020/0298079 A1 * 9/2020 Mullins A63B 67/06

* cited by examiner

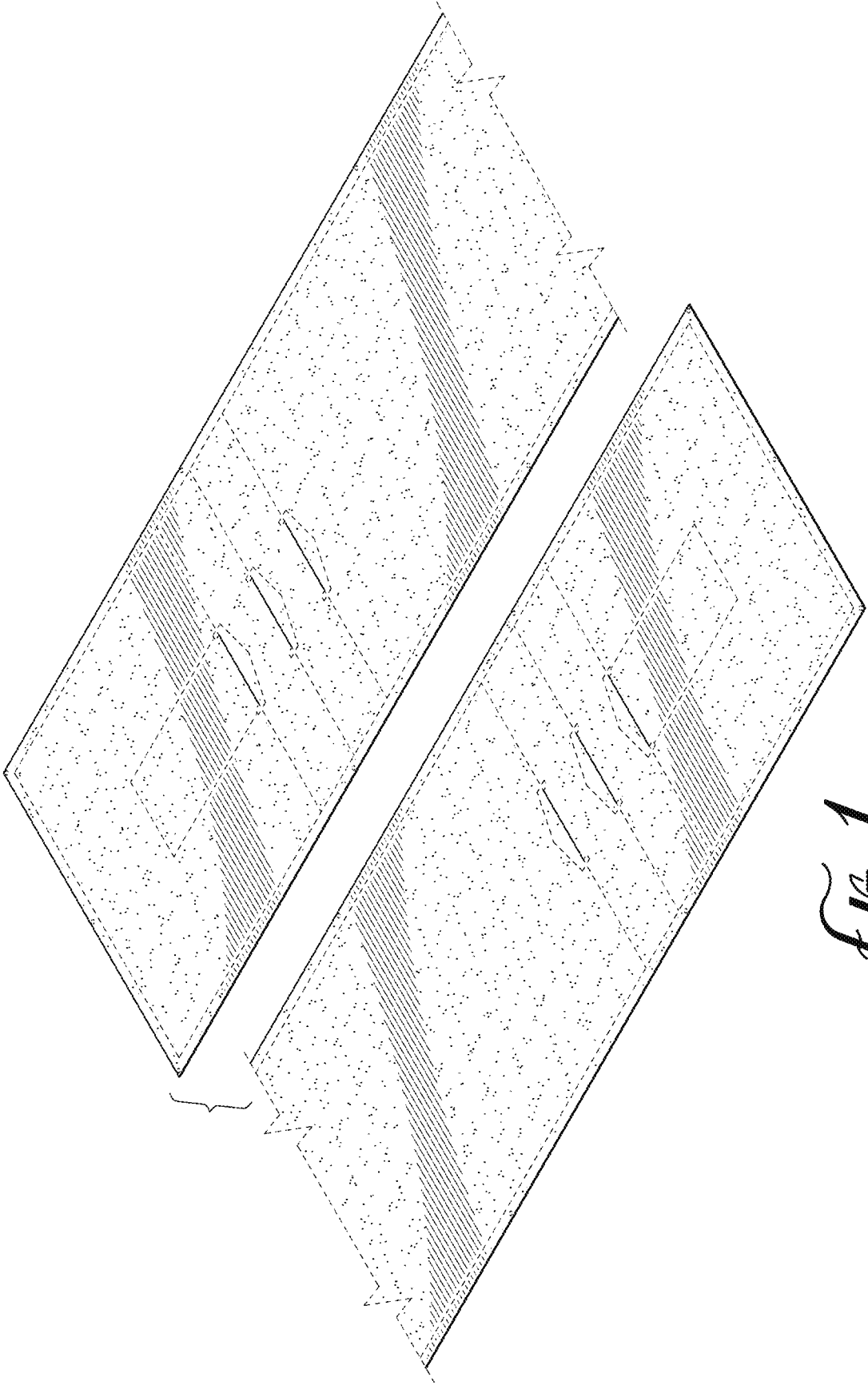


FIG. 1

FIG. 2

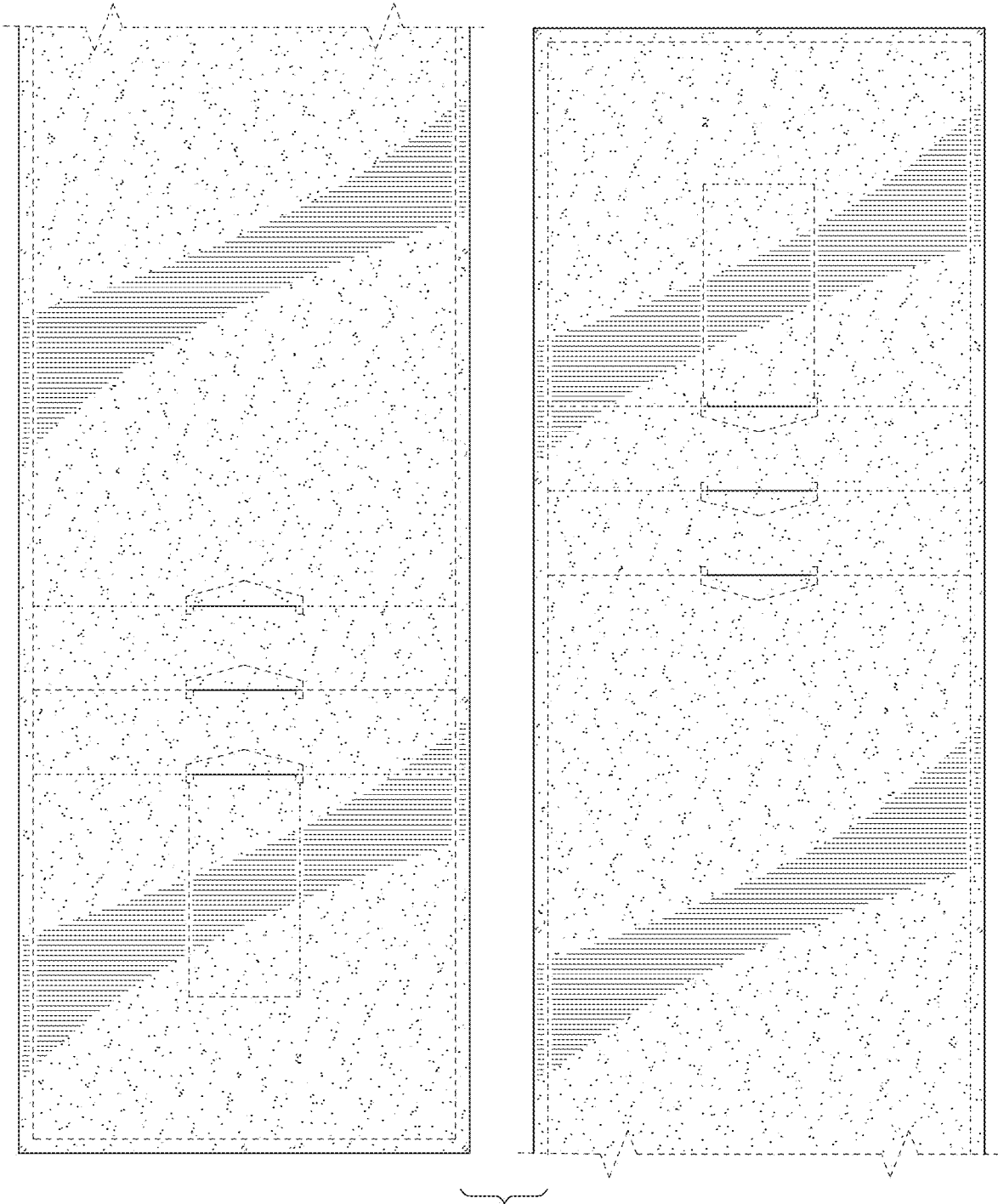


FIG. 3

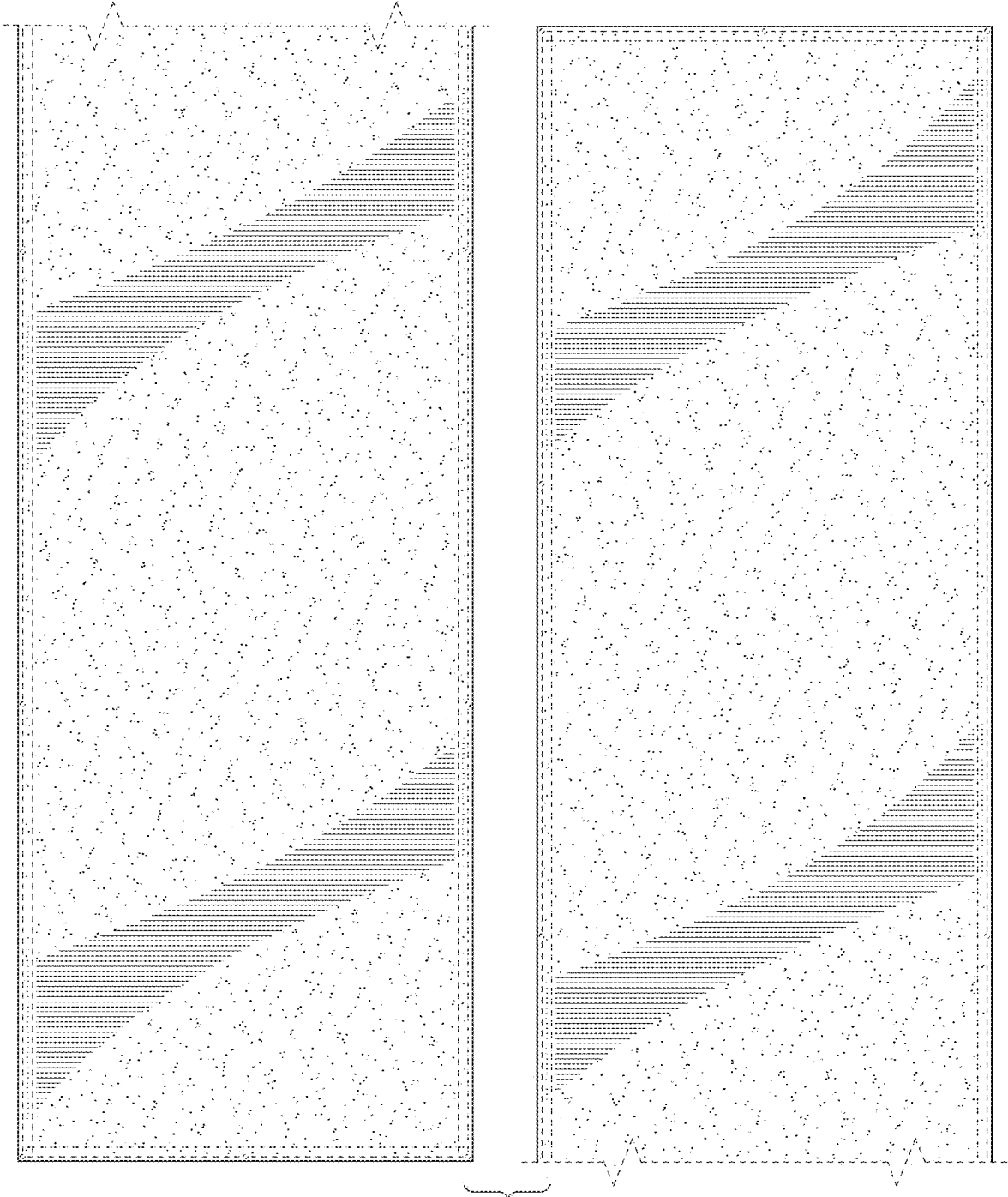




FIG. 4



FIG. 5

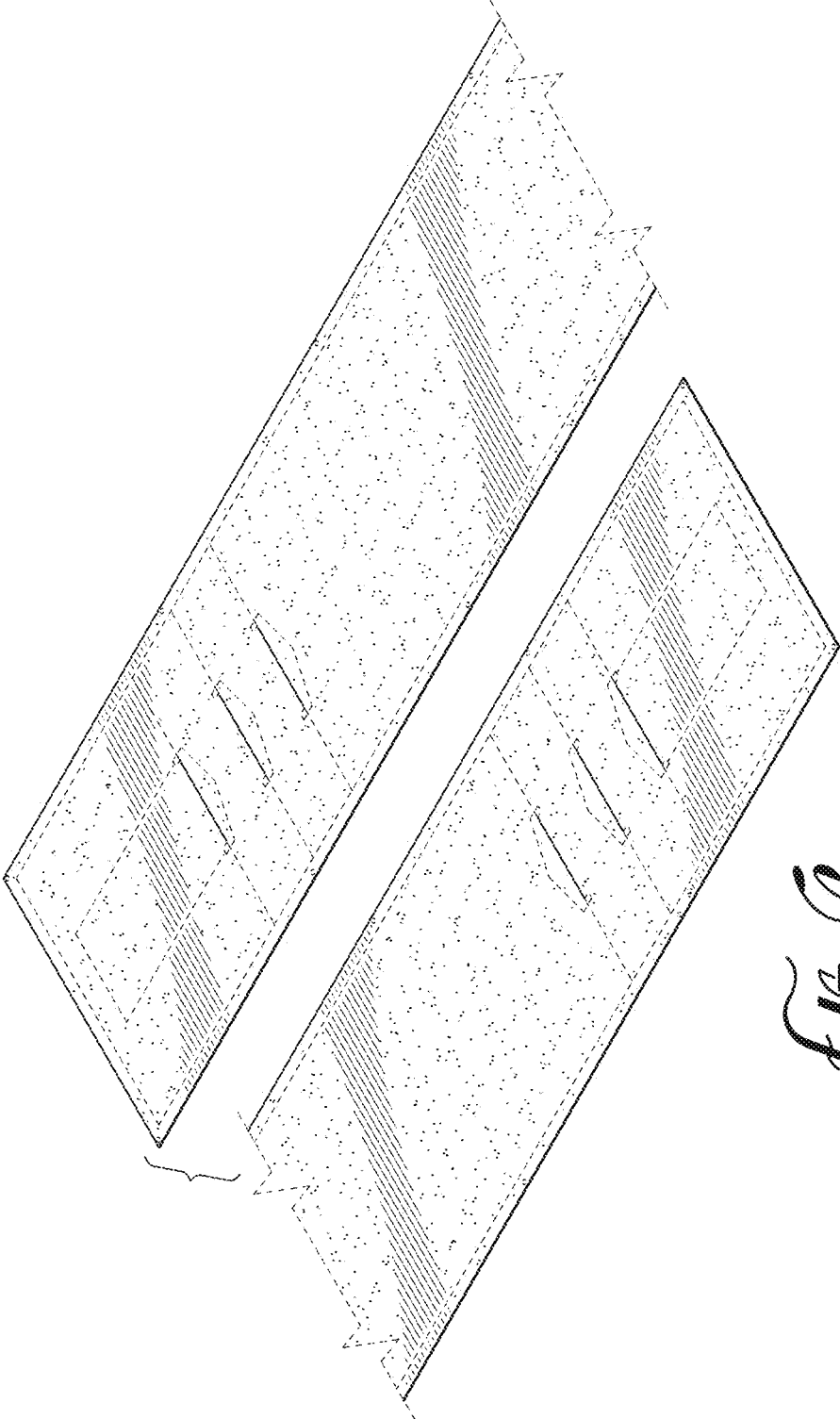
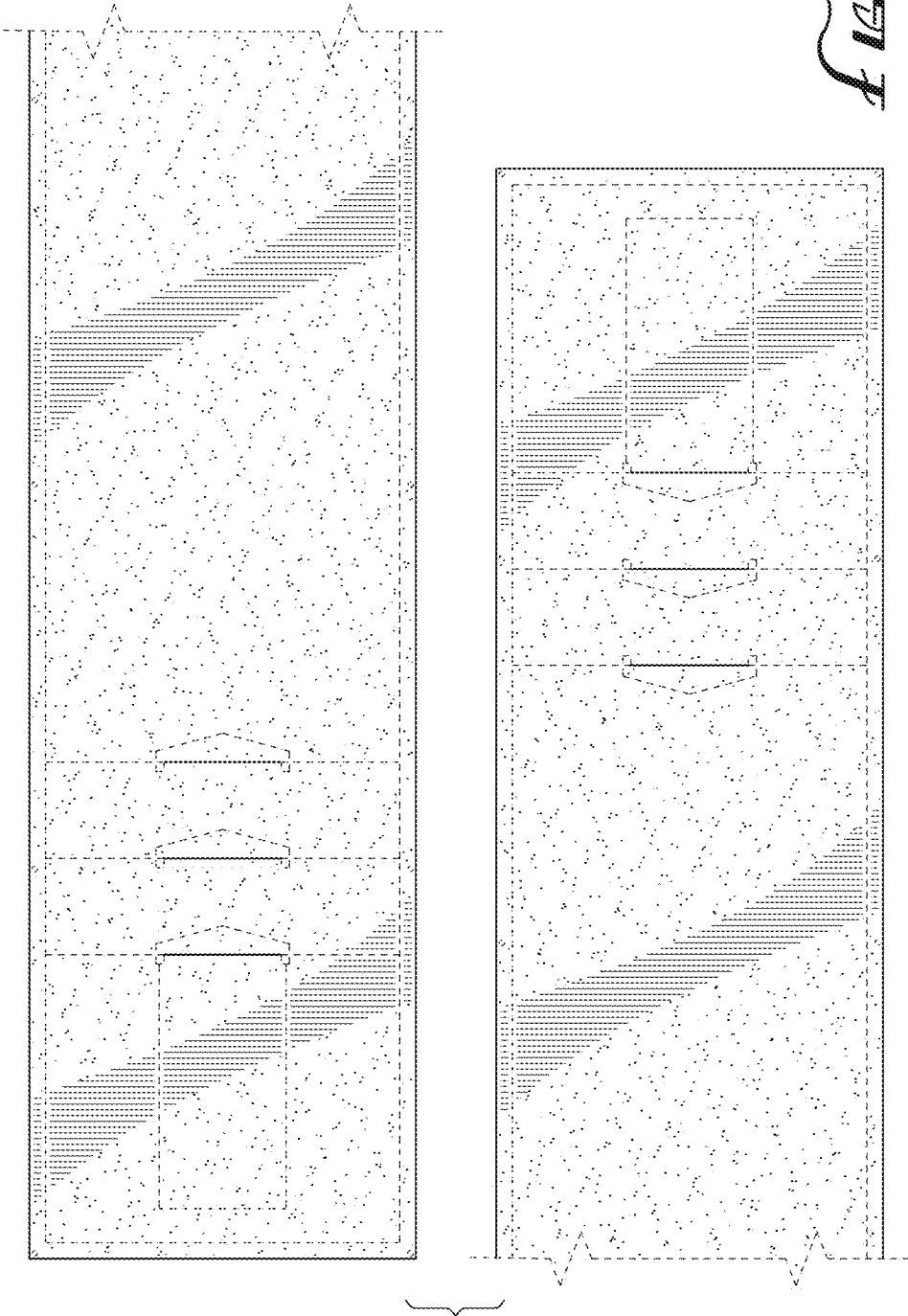
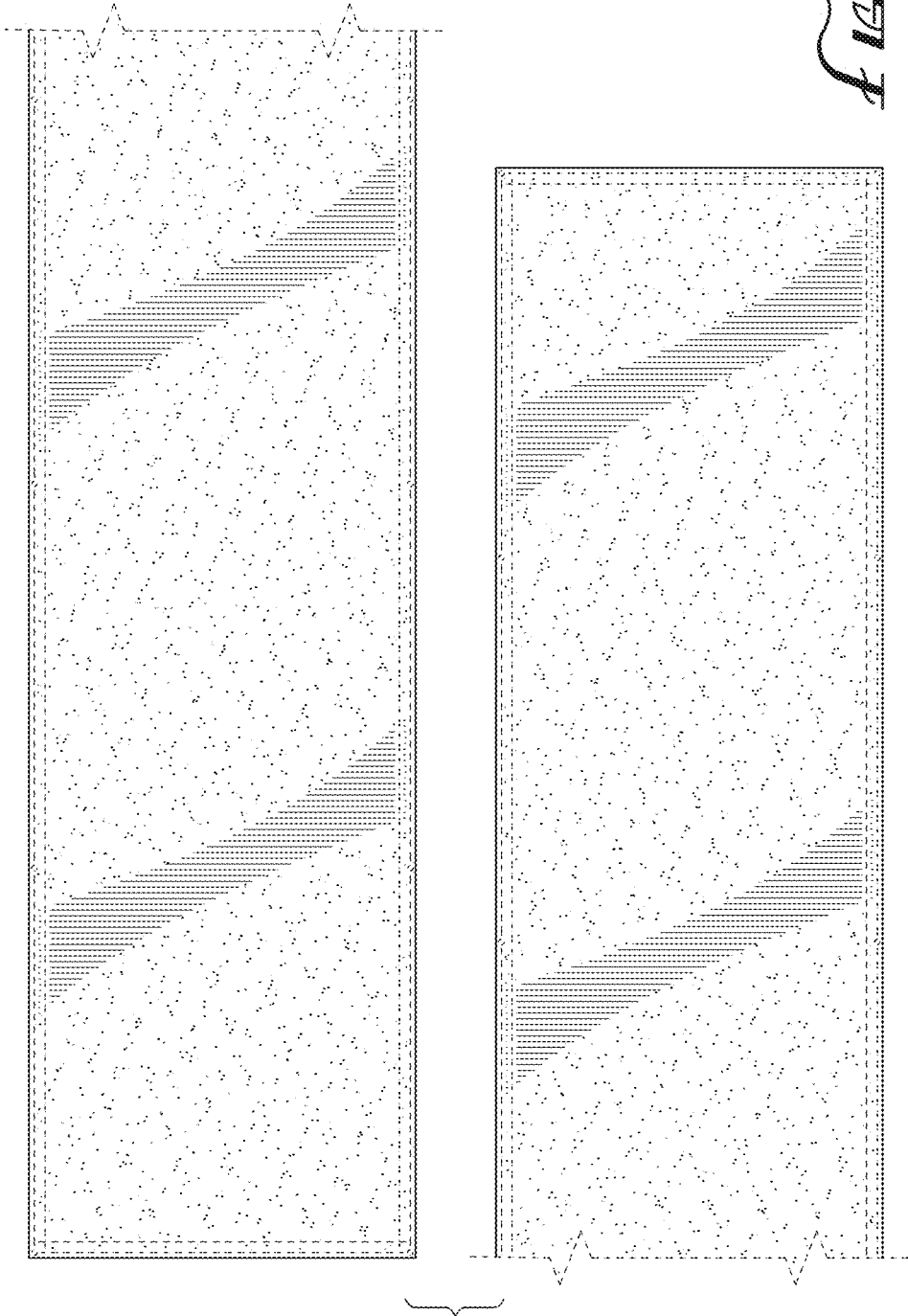


FIG. 0

FIG. 7





B. B.
Fig. 8

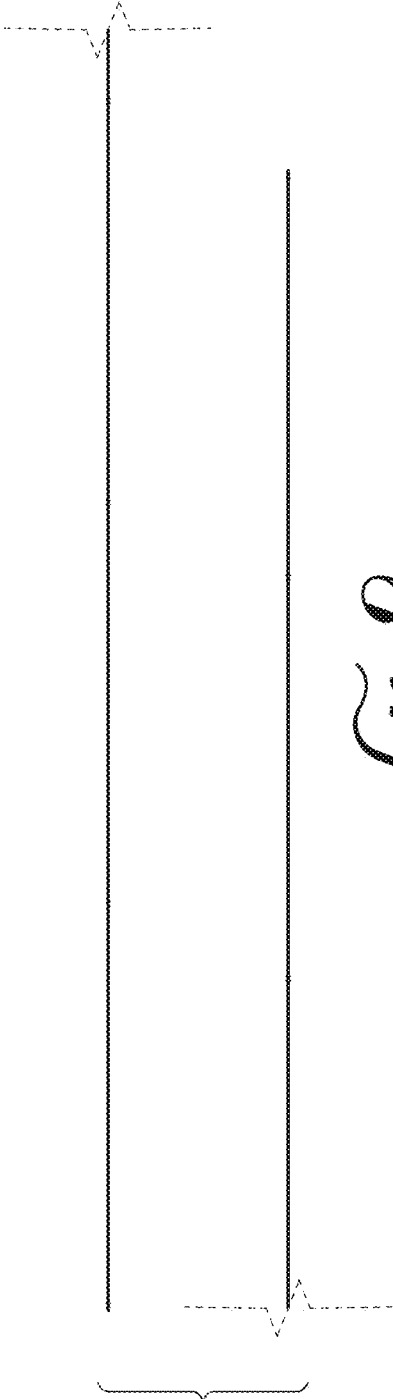


FIG. 9



FIG. 10

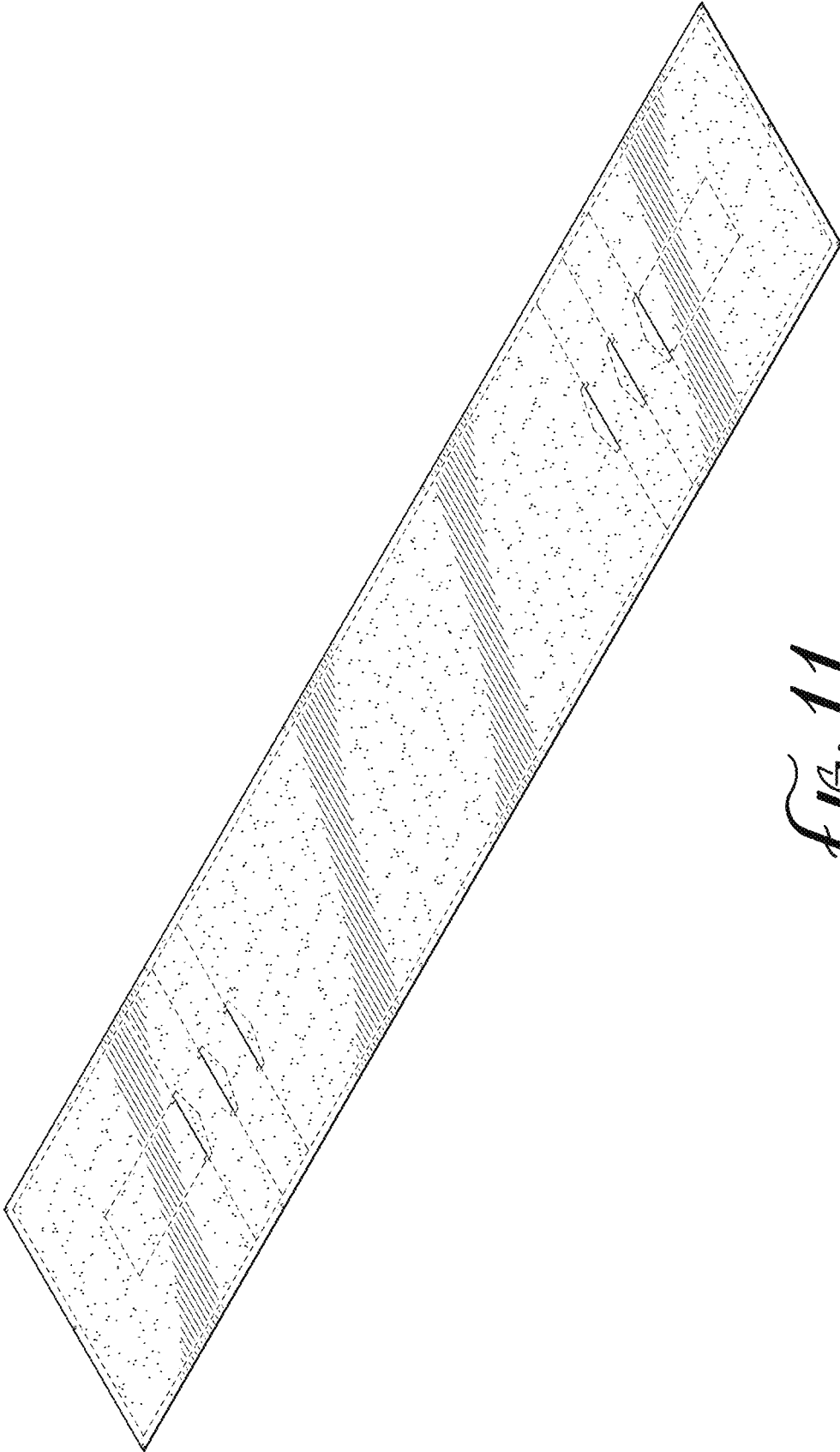


FIG. 11

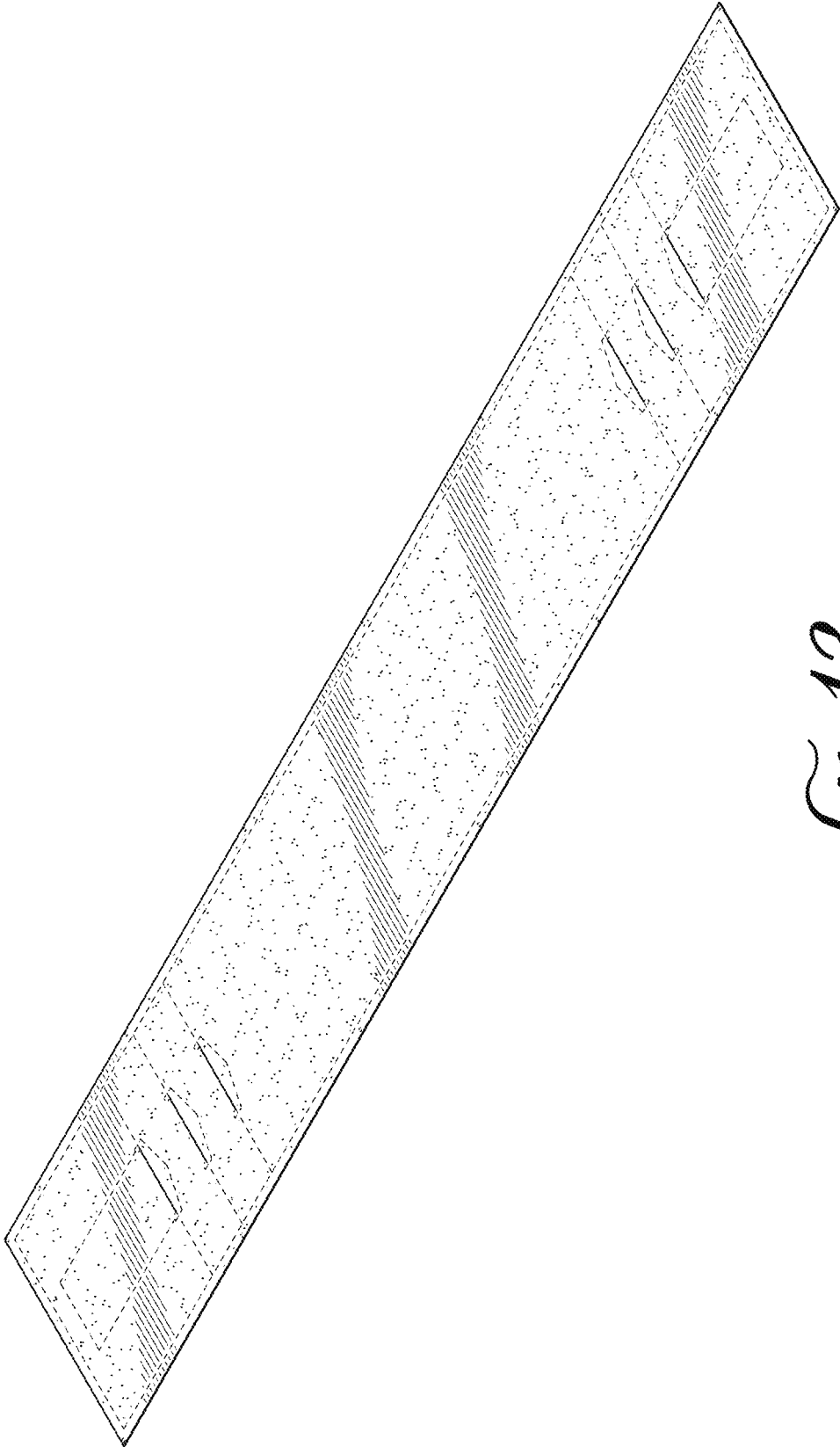


FIG. 12